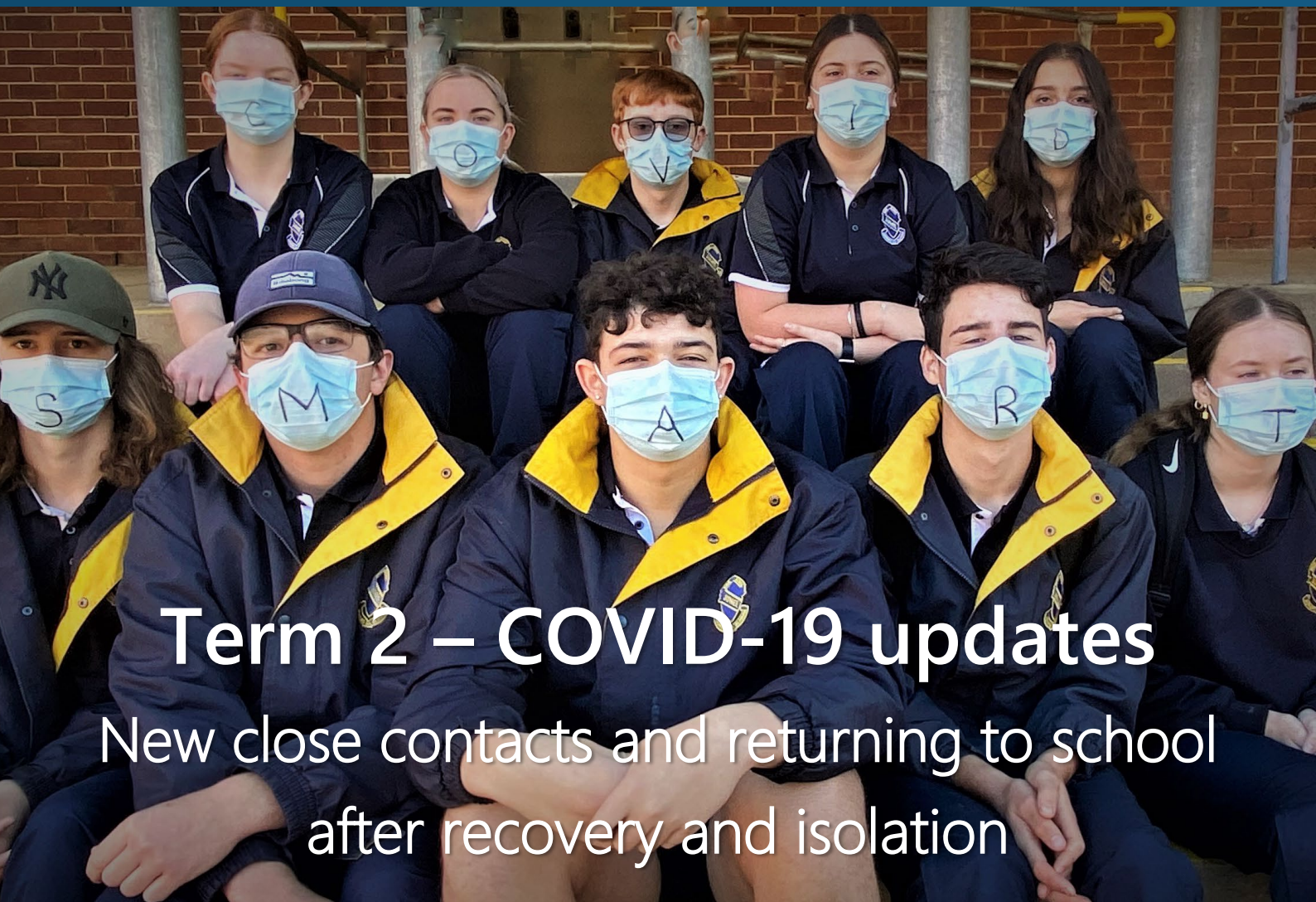




Junee High School

Newsletter



Term 2 – COVID-19 updates

New close contacts and returning to school
after recovery and isolation

To Dream. To Create. To Succeed.

- Phone: (02) 6924 1666
- Email: junee-h.school@det.nsw.edu.au
- Website: <https://junee-h.schools.nsw.gov.au>

Junee High School
52 Lydia Street
Junee NSW 2663



Education

A PROUD MEMBER OF THE





Junee High School

■ Principal: Mr Darren Hamilton
■ Phone: (02) 6924 1666
■ Email: junee-h.school@det.nsw.edu.au
■ Website: <https://junee-h.schools.nsw.gov.au>

To Dream. To Create. To Succeed.

Junee High School
52 Lydia Street (PO Box 141)
Junee NSW 2663

■ 2022 ■ Term 2 ■ Week 2

■ Newsletter 22/03

Calendar

Term 1, Week 9

Tue 3 May	Playgroup commences - 9:00am
Wed 4 May	Planned Industrial Action – minimal supervision only at school
Thurs 5 May	HSC Music Study Day at Koorringal High School
Fri 6 May	UOW School Visit P4

Term 2, coming events

Wed 11 May	P&C AGM 6pm
Fri 13 May	Riverina Lawn Bowls Trials
Wed 25 May	Bill Turner Cup
Thurs 26 May	Start Year 11 Prelim Exams
	Zone Cross Country
Tue 31 May	Finish Year 11 Prelim Exams

Changes to payment methods

In keeping with the Department of Education policy, Junee High School is **no longer able to accept EFT payments over the phone.**

Cash and EFTPOS payments may be made in person at the school office, or through the Parent Online Payment (POP) facility which can be accessed via the Junee High School website at:

<https://junee-h.schools.nsw.gov.au/>.

You will see the **'Make a Payment'** option at the top of the page. Or you can scan the QR code below, which will take you straight to the payment area:

Please include your **POP receipt number** in the space provided on your child's permission note or remittance slip.



In this issue....

Changes to payment methods.....	2
Principal's Report.....	3
Changes to COVID rules.....	3
P&C Annual General Meeting.....	3
Parent/Teacher Night - Change of Date to Wednesday 11 May	3
Industrial Action 4 May.....	3
Cross Country Carnival.....	3
NAPLAN Year 7 and Year 9 2022.....	3
Student reward excursions and elective and school fee payments.....	3
NAPLAN 2022.....	4
Science News.....	4
What's cooking in the Canteen.....	5
COVID updates from the beginning of Term 2.....	6

Feature Photo



Eligibility for Excursions

Students who wish to attend excursions need to have paid all subject fees to be eligible.

Eligibility for excursions will also be dependent upon acceptable behaviour and attendance levels.

In line with new COVID rules, close contacts will not be permitted to participate in overnight excursions. Student subject fees and voluntary contributions were sent home at the end of Term 1.

Principal's Report

Changes to COVID rules

Welcome to the start of a brand-new term, after hopefully enjoying a safe and restoring break. I want to give you an overview of how we are continuing to ensure our school remains COVID-safe through our updated Term 2 settings. Some of the layered COVID-smart measures you've come to know in recent months will continue this term. **You will find the details on Page 6 of this newsletter.**

P&C Annual General Meeting

The Junee High School P&C Association will hold its AGM on the new date of:

Wed 25 May 2022 at 6:00pm in the Common Room

Parent/Teacher Night - Change of Date to Wednesday 11 May

Unfortunately, we have had to change the date for our planned Parent/Teacher Night to **Wednesday 11 May**. Current online Parent Portal bookings will be cancelled and a new booking process open for parents to access on our Sentral Parent Portal.

We are also in the process of building our online Parent Portal that allows parents to make online bookings of 15 minutes duration. If you need to speak with teaching staff for a longer session, please make contact for an appointment with the school.

Industrial Action 4 May

A letter has gone out on Monday 2 May informing parents/carers of the upcoming Teachers' Federation industrial action on **Wednesday 4 May**. Our school will have minimal supervision with no planned lessons being conducted. Please consult the letter for more information regarding this planned industrial action.

Cross Country Carnival

Our Cross Country Carnival will be held this coming Thursday 5 May. I look forward to seeing high participations rates and attendance for this day, like those of the last two carnivals!

NAPLAN Year 7 and Year 9 2022

NAPLAN for Year 7 and 9 will be on Wednesday 11 and Thursday 12 May. Practice tests have been completed at the end of Term One. It is important that students take these seriously as testing results and information provides data for the school in developing support programs and focus on Literacy and Numeracy gaps in students' knowledge. Testing data also supports the professional learning of our staff in developing consistency of practice across the school for literacy and numeracy support of all students.

Student reward excursions and elective and school fee payments

The first student reward excursion to the 2022 State of Origin will be coming up this Term. Student fee payment and other related aspects of high levels of attendance, assessment completion and school-based application will form the basis for the selection to these reward excursions. It is important for all students to pay school fees that cover expenses for their learning. If you would require support in these payments, please make a time

to meet with me to discuss options for how the school can support your child/children. Expressions of Interest will go out in the coming weeks for the planned Surf Trip at the end of Term Four to the South Coast. Similar conditions and expectations will be stated and confirmed in this information.

Darren Hamilton
Principal

NAPLAN 2022

The National Assessment Program – Literacy and Numeracy (NAPLAN) is a point in time assessment of literacy and numeracy skills. Students in Years 3, 5, 7 and 9 participate in the annual tests in writing, reading, conventions of language (spelling, grammar and punctuation) and numeracy. All NSW schools will sit NAPLAN online in 2022.

Our school will be participating in NAPLAN between -
10 and 20 May 2022.

Excessive preparation for NAPLAN is not recommended. Students can use the [public demonstration site](https://www.nap.edu.au/online-assessment/public-demonstration-site) (<https://www.nap.edu.au/online-assessment/public-demonstration-site>) to familiarise themselves with the types of questions and tools available in NAPLAN.

If you have any questions about NAPLAN, please contact your child's teacher.

Mrs Rhonda Heffernan

Science News

Mr Paton's Year 8 Science class is learning about mixtures. Today they discovered the difference between the dissolved substances like sugar is in regular Coke and Coke Zero.



Can you tell the difference?



Year 7 students have been learning about **Matter**. On Friday they applied their knowledge of atoms to build 3D models of some common compounds. A few groups were keen to try and build more complex molecules like

Well done Year 7!



Mr David Fellows
Head Teacher Science/Mathematics and PDHPE

What's cooking in the Canteen

It's Term 2 and the cold weather is on the way. It won't be long before I have the soup pot out and yummy hot soup ready every day.

Pies and Sausage Rolls will be available to order for lunch from next week.

I am glad to see lots of you using the online ordering system and I hope it is making it easier for you and the kids to order lunches. Please make sure your child knows that lunch will be waiting for them at the canteen. I have had a few lunches not picked up.

I am also in need of volunteers, at the moment I have one mum coming in one day a week (when she can). I know a lot of parents work and it is not possible but maybe you know someone who has three and a half hours to volunteer in the canteen. Hours are from 10am to 1.30pm. Ring the school and ask for the canteen to speak to me.

Thank you

Maree
Canteen Manager

Community News



Accessing the NDIS Information Session

Intereach are presenting a free information session for doctors, mainstream health providers, Family and Community Services teachers, daycare educators and mental health professionals to provide information and support on how to assist participants aged 0-65 years with accessing the NDIS.

Intereach Local Area Coordination and Early Childhood team members will be available to provide information and answer any questions you may have.

When: Tuesday, May 17

Where: Intereach Cootamundra Office

Time: 6pm - 7.30pm

RSVP: By May 10 to intereach.murrumbidgee@ndis.gov.au

For more information please contact:
Tahlia Hardy - Intereach Local Area Coordinator
Email: contact@intereach.com.au
Phone: 1300 488 226

For more information about the services Intereach offers:
P: 1300 488 226 | www.intereach.com.au



Junee High School

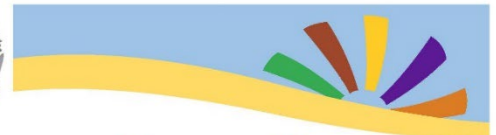


P&C Annual General Meeting

Wed 25 May 2022

at 6:00pm

in the Staff Common Room



Junee Family Day

Supported by the Junee Intercity Group.

Join us for a **FREE** day of fun, games, activities and information to celebrate families week.

*Bring your bike or scooter and helmet to try out the bike safety track.

All carers, grandparent's, families and children most welcome.

Wednesday May 4th

2pm-5pm

Junee Recreation and Aquatic Centre



1300 364 277
www.racr.org.au

COVID updates from the beginning of Term 2

Changes to isolation for close contacts

On 20 April the NSW Premier made the announcement to [ease the isolation requirements for close contacts](#) which will enable students and staff who are close contacts and **have no symptoms** to continue to attend school, if they follow NSW Health guidelines, including **daily rapid antigen testing** and **wearing a mask indoors** (for all staff and secondary students). Those who are caring for a family member, who are unwell or showing COVID symptoms, should continue to isolate at home.

Returning to school after recovering from COVID-19

NSW Health has also updated its [advice for people who have recovered from COVID 19 leaving isolation](#). After the 7-day isolation period, they should wear a mask for an additional 3 days.

Rapid Antigen Tests (RATs). The department will continue to supply RAT kits to students and staff to support symptomatic testing and testing for close contacts returning to school. Junee High School will continue to provide rapid antigen tests for students and families, on request, until our stocks are exhausted. Once department-supplied RATs are exhausted, please continue to access PCR tests and store-purchased RATs, which are now readily available.

Masks. The latest NSW Health advice recommends wearing a mask for people who have recovered from COVID-19 and recently completed their 7-day isolation period for an additional 3 days (from days 8 to 10 after receiving a positive COVID-19 result). Where students or staff are unable to wear a mask, they should be supported to learn or work remotely.

Responding to our local situation. We will continue to liaise with NSW Health and the department's Health and Safety case management team to ensure our COVID-smart settings keep-up with the latest developments and as local conditions require. This may mean temporarily reintroducing some additional COVID-smart measures.

We will make sure to update you at the earliest opportunity if any of these additional measures are required in Term 2.

Ventilation. The department is reviewing environmental differences across NSW as part of their winter ventilation planning and will provide local guidance to schools, including advice on maximising natural ventilation while balancing the use of indoor and outdoor learning areas.

Reducing the risk of illness this winter. Finally, it's important to note NSW Health's advice to reduce our risk of not only COVID-19, but also other illnesses that may affect our school this winter like the flu. We can all protect our loved ones and our community by:

- Taking a RAT before visiting vulnerable loved ones or going to large gatherings and events
- Staying home if unwell
- Keeping up to date with vaccination – including the flu vaccine
- Get tested immediately for COVID-19 if you become symptomatic and isolate until a negative result
- Practicing good hand hygiene by washing regularly with soap and water and by using sanitiser.